

**TOTAL OF 55 EXISTING PARKING SPACES for CURRENT USES as of 4/07/2020:**

- 1012 S. Presa St. – CofO AP#1834405 for Restaurant w/Alcohol Sales (Bite)
- 1014 S. Presa St. – No CofO on file
- 1016 S. Presa St. – CofO AP#1510984 for Photo/Art Studio/Hair Salon (Mint Salon)
- 1018 S. Presa St. – No CofO on file (J&O’s Cantina)
- 1020 S. Presa St. – CofO AP#1207819 for Dance Studio (Eagle Tax & Bookkeeping)
- 1029 S. Presa St. – No CofO on file (parking lot)
- 1032 S. Presa St. – CofO AP# 433493 for Restaurant w/Alcohol Bev. (Taco Haven)
- 1035 S. Presa St. – CofO AP#2205174 for Restaurant w/Alcohol Sales (The Patio)

**Chpt. 35-526. - Parking and Loading Standards.:**

*(a) **General Requirements.** The off-street parking facilities required by this article shall be provided for all uses except where otherwise indicated by this section. One (1) specific exemption provided by this sections is that areas zoned "D" downtown district shall be exempt from the off-street parking facilities provisions. The location, design, and number of spaces shall conform to the provisions of this section. **In the event a use is enlarged or expanded, the amount of off-street parking facilities that would be required if the increment were a separate use shall be provided.***

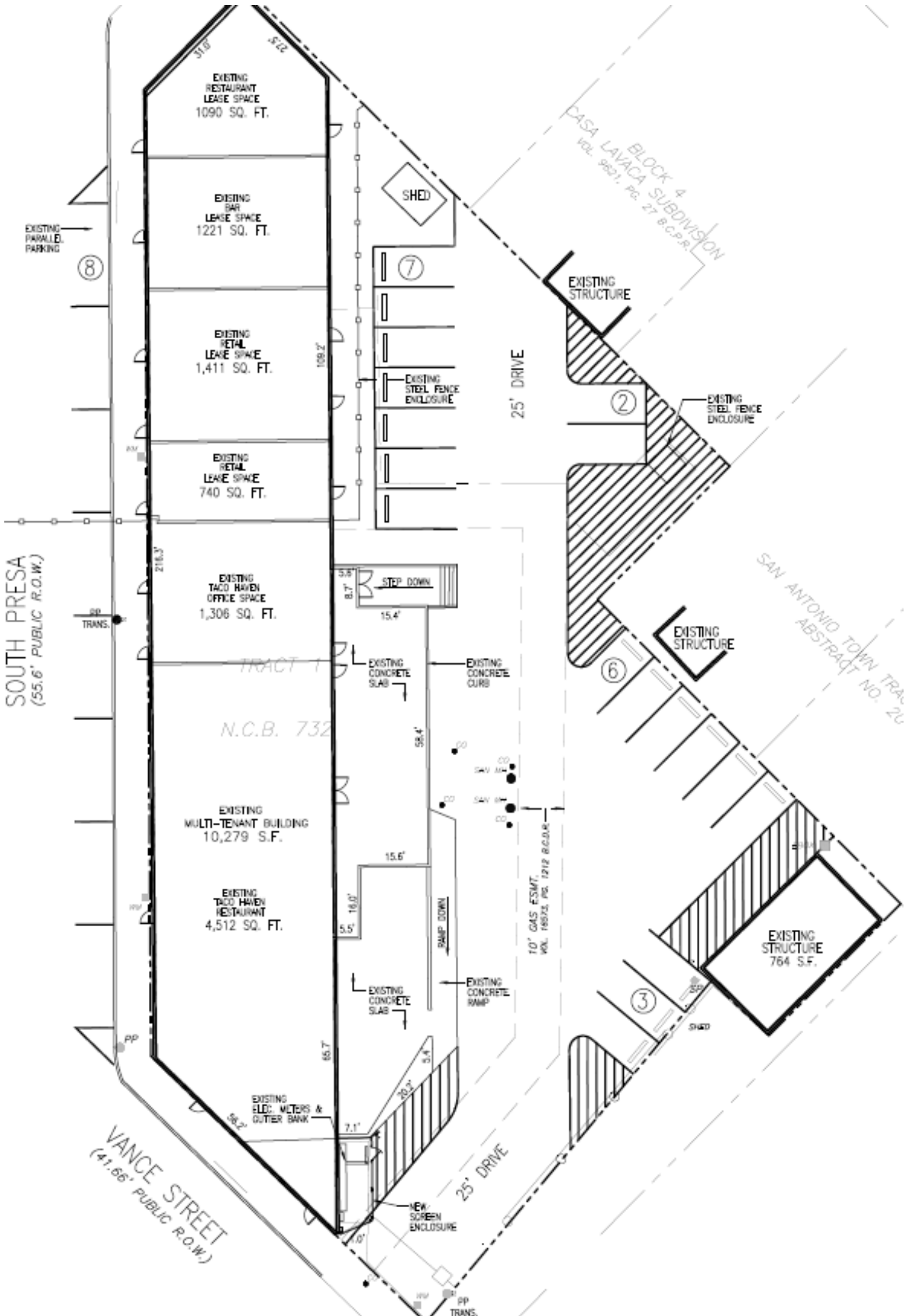
ALCOHOL	ALCOHOL - bar, lounge, tavern, nightclub, or dance hall Building area gross square footage (GSF)* * Gross square footage of entire building including accessory uses such as offices, kitchens, restrooms, storage areas, mechanical and dressing rooms.	1 per 100 sf of GSF
---------	--	------------------------

**TACO HAVEN STRIP CENTER (1012-1032 S. Presa St.):**

New Patio Dining Area = 1,020 SF - Area subject to demo = 1,020 SF = **0 SF Increment**

**\*NO ADDITIONAL PARKING SPACES REQUIRED BASED ON INCREMENT USE**

**Proposed = 18 parking spaces behind + 8 parallel in front of Taco Haven Strip Center:**





**20 existing parking spaces behind + 8 parallel in front of Taco Haven Strip Center:**





**27 existing parking spaces for restaurant/bar located at 1035 S. Presa St.:**

(863 SF Open Canopy Outdoor Dining Area)

